



Product Description

MLS-x1F3 is Long Reach Ethernet Switch. It's let the uplink provide combo interface (UTP and BNC). The normal operation distance can reach 500 meters. In the same time also provide the Standard 100 meters Ethernet distance. No more repeater to install. (no more daisy chain up to four repeater) Peer to peer long Reach Ethernet switch. The following is a solution for (MLS-x1F3).

[To installation Ethernet cable had length of 100 meters distance limitation, over long distances also takes another Ethernet repeaters to ensure that modulate Ethernet signal quality].

『 No need Repeater 』 MLS-x1F3 uplink interface support can using Cat5e or Coaxial Cable to extender Ethernet distance and let both site Ethernet framework pass through.

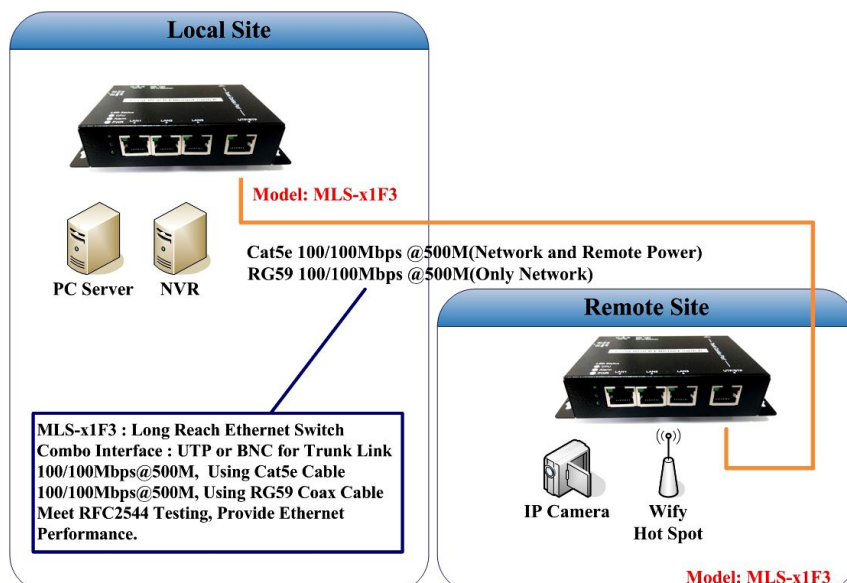
Allow using exist coaxial/UTP cable to provide Ethernet connective function. It's will provide the remote site to install new 1080P or 4K IP camera enough Ethernet bandwidth.

Key features

- ◆ The uplink interface provides UTP and BNC combo interface for trunk connection.(Meet the actual installation requirements.)
- ◆ The uplink UTP network line is compatible and the other end is a standard network device (the connection distance is the standard network distance).
- ◆ Transmissions speed is automatically adapted to adjust:
 - ◎ 500 meters (1,640 feet) distance using Cat5e Ethernet Cable, the transmission speed of up to 100/100Mbps.(Data Transmission)
 - ◎ 500 meters (1,640 feet) distance using RG59 Coaxial Cable, the transmission speed of up to 100/100Mbps.(Data Transmission)
 - ◎ 500 meters (1,640 feet) distance using Cat5e Ethernet Cable, the transmission speed of up to 100/100Mbps. (Data Transmission and Remote Power Feeding)
- ◆ No need install repeater node requirements, plug and play: easy to install settings, no additional settings for equipment.
- ◆ No need install driver, Compatible with standard network OSI Layer 7 protocol.
- ◆ Operates transparent to high layer protocols such as TCP/IP and VLAN tagging.
- ◆ Auto-MDIX and Auto-sensing 10Base-T or 100Base-TX and Full or Half-Duplex on the Ethernet port.
- ◆ Status LEDs for simple monitoring of the device and connection status.
- ◆ Build in Watch Dog Function, to provide the Trunk Link path controller also provide device protection and connection status.

Applications

- ◆ Use existing CCTV Coaxial/UTP cable to extend the Ethernet network in different places.
- ◆ Use existing CCTV Coaxial/UTP cable to add 1080P IP surveillance network interconnection extending in two different places.
- ◆ Use existing CCTV Coaxial/UTP cable simultaneously transmit IP Camera video surveillance and IP traffic control.



Product Model MLS-x1F3 : Wall Mont Steel Case, Long Reach Ethernet Switch

Technical Specifications

Hardware

Connectors:	3x 10/100 Base-T RJ45 TP 1x 10/100 Base-T RJ45 TP/1x BNC TRUNK (Combo port) 2 PIN DC IN (PWR 1) 2 PIN DC IN (PWR 2) Terminal Block 2 PIN DC OUT(PWR 3) Terminal Block DC12V/1A out (MLS-x1F3-D-32 support only)
Indicators :	CPU Status LED Alarm Status LED PWR Power LED LAN1~UP Link/Act LED x4
Power Protection : (Surge)	IEC 61000-4-2 level 4 (ESD) , 15 kV (air discharge), 8kV (contact discharge) IEC-61000-4-5 MIL STD 883G, method 3015-7 Class 3B, -25kV HBM(human body model)
Installation :	Wall Mount ear
Dimension :	132mm(W) x 85mm(D) x 28mm(H)
Weight :	230g
Power Requirement :	External Power Supply: DC/12V 1A, or DC/36V 1.4A System Power Consumption: <1.5 Watt

Switch Specification

Network Standards :	IEEE802.3 10BASE-T, 10Mbit/s IEEE802.3u 100BASE-TX, 100Mbit/s, Auto-negotiation IEEE802.3x Full Duplex and Flow Control MDI/MDI-X Auto Crossover
Switch Processing Scheme :	Store and Forward
Address Table :	Support 1K MAC address entries
Flow Control :	Back pressure for half duplex IEEE 802.3x Pause Frame for full duplex
Switch fabric :	800 Mbps
Transmission Speed and Distance :	Up to 100/100Mbps@500 meters (168 Series 5C-FB) Up to 100/100Mbps@500 meters (BARE COPPER, 24AWG Cat5e UTP/STP)
Maximum Transmit Unit :	2K byte
Emissions Compliance :	FCC part 15 Class B, CE Mark
Stability Testing :	IEC60068-2-27(Shock) IEC60068-2-6(Vibration)
Environmental Conditions :	Operating Temperature : -20°C ~ 70°C (-4°F ~ 158°F) Storage Temperature : -20°C ~ 85°C (-4°F ~ 185°F) Operating/Storage Humidity : 10% ~ 90%, Non-condensing
MTBF :	65,000 HR (25°C)

Ordering Information

MLS-x1F3-K-12	Wall Mont Steel Case, Long Reach Ethernet Switch x1, DC12V Adaptor x1
MLS-x1F3-D-12	Wall Mont Steel Case, Long Reach Ethernet Switch x2, DC12V Adaptor x2
MLS-x1F3-D-36	Wall Mont Steel Case, Long Reach Ethernet Switch x1, DC36V Adaptor x1
MLS-x1F3-D-V-12	Isolation Version of Wall Mont Steel Case, Long Reach Ethernet Switch x2, DC12V Adaptor x2

Contact Information

Email : more_info@mlinksys.com
Address : 14F., No. 46, Changxing 1st Rd., Bade Dist., Taoyuan City 33454, Taiwan
TEL : +886-3-368-1825